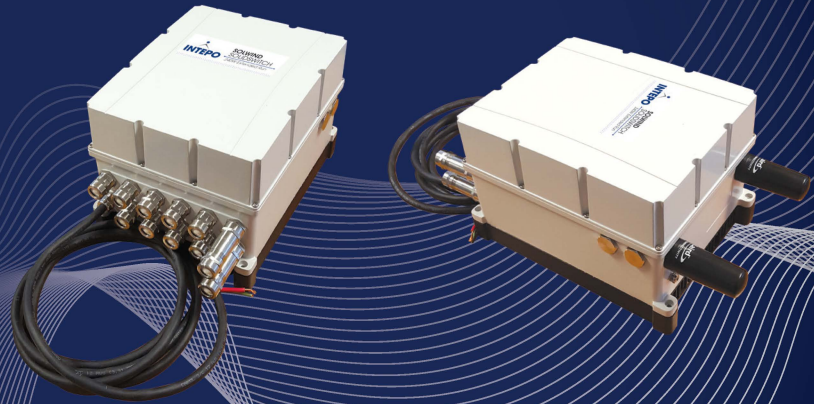




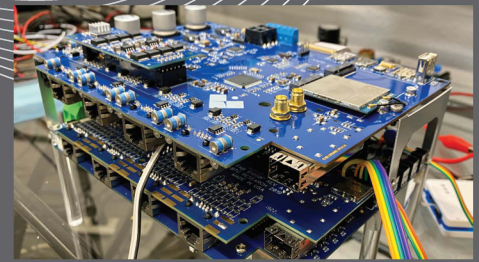
SOLWIND SOLIDSWITCH

A NEW APPROACH TO
EDGE NETWORKING
EXCELLENCE



The latest addition to **INTEPO's** line of layer 3 industrial POE switches, this robust device is integrated with remote intelligent power, MPPT charge controller and wireless data connectivity to provide Command and Control to Edge networking in remote locations. Designed to operate autonomously, these units connect directly to solar panels or wind turbines and have adequate output to power up to 8 POE devices. A multi-functional Auxiliary port with 3 programmable power supplies provide 5 to 30VDC output up to 30W to provide multi-configurable outputs of VDC, USB2.0 and RS485. The communications functionality is designed to operate at multiple frequencies to cover LTE, Private LTE, 802.11, Pt to Pt, Pt to MP and mesh networking requirements.

A form factor the size of a ream of paper, the **SolWind-SolidSwitch** is ideal for backhaul, perimeter security, remote Oil & Gas sites, pipeline transmission, border wall security, forestry surveillance, remote Intelligent Transportation requirements and more.



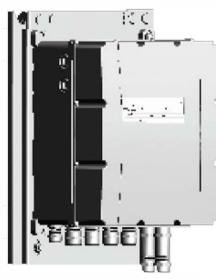
A fully integrated solution designed from the bottom up bringing together all critical services in one device. **SolWind** is more than network hardware, it's a solution for the Edge. Intelligent power with a sophisticated Battery Management System and MPPT charge controller brings a new approach to Edge networking where power and connectivity are unavailable or unreliable.

Delivering 240W from a hermetically sealed IP68 enclosure capable of operating when fully submerged, **SolWind** has the capability to deliver an additional 360W of battery charging power to the 1400Wh of internal battery storage and doing so at an ambient temperature range of -35°C to 60°C.

The user friendly Command Post provides full diagnostics and remote management of all systems on board.



UPS-SolidSwitch Command Post



Installation Assembly

CALL US TODAY
(866) 268-9479

VISIT US
www.INTEPO.com

EMAIL US
info@INTEPO.com

PRODUCT ADVANTAGES

- Hardened for harsh environments
- Redundant, Resilient, Multi-Functional and Integrated
- Online and Remotely Managed Intelligent Power
- Onboard Cellular, WiFi, Pt.-Pt-Pt-MP and Wireless Mesh
- Schedule Outlet Power On and Off
- Schedule Port Power On and Off
- Remotely Monitor Power Consumption
- Self Recycles Power to IoT Devices if Required
- Online "Data Center Quality" UPS
- Remotely Monitor Battery Health
- Remotely Monitor Battery Consumption
- Schedule/Prioritize Load Shed to Max Battery Life
- 1400Wh Li-Ion fast Charge in < 6 hours
- Self monitors temperature & adjusts charge rate
- 90-264 VAC 50/60 Hz input/20-160 DCV input
- Solar panel or Wind turbine Direct Input
- Internal MPPT Charging Controller
- Layer 3 varying Multi-Port configurations 802.3bt

US REGISTRATIONS

- DUNS 009338298
- CAGE Code 7GWL6
- NAICS 334111, 3341188, 334419, 511210
- SMB
- Accept Credit and Purchase Cards
- GSA Schedule via Partners
- Manufactured in the USA

GENERAL AND ENVIRONMENTAL

Power Input	12VDC to 160VDC
Port Configuration	8 PoE + 2 SFP + 1 Aux Port with UL497B Surge protection on each port
Data Rates	Gigabit
Internal MPPT Controller	Integrated with on board Intelligent power to most effectively maintain power to devices while providing maximum possible battery charging.
PowerPak	4 ea, 350Wh Li-Ion PowerPaks
Mounting	Wall Mountable or Pole Mountable Installation Kit (Sold Separately)
Operating Temperature	-35°C to 65°C - NEMA TS-2 Certified IP68
Storage Temperature	-40°C to 85°C - NEMA TS-2 Certified
Safety & Regulatory Compliance	UL, cUL, CE, RoHS Compliant, WEEE Compliant, UL497B PoE Compliant

PRODUCT FEATURES

- Fully Managed Layer 3, 4 or 8 Port Industrial PoE BT Gigabit Switch with 2 SFP's Ports
- Auto-negotiation and auto-sensing (MDI/MDI-X)
- SNMP V2, V3 - DES/AES/AES192/AES256
- Supports IEEE 802.1d Spanning Tree Protocol (STP)
- Supports IEEE 802.1p Quality of Service (QoS) 4 Priority queues with dynamic packet mapping
- Supports IEEE 802.1q VLAN Support for 128 groups and 4096 ID's
- Supports IEEE 802.1s Multiple Spanning Tree Protocol (MSTP)
- Supports IEEE 802.1w Rapid Spanning Tree Protocol (RSTP)
- Supports IEEE 802.1x allows dynamic, Port-based security, providing user authentication
- Supports IEEE 802.3u 100Base-TX
- Supports IEEE 802.3ab 1000Base-T
- Supports IEEE 802.3bt providing up to 100W output at the port
- Supports IEEE 802.2x Flow control/Collision control
- Supports Internet Group Management Protocol (IGMP) v1/v2/v3
- Supports Jumbo Frames up to 9000 bytes
- Supports IPv6 Multicast Listener Discovery (MLD)
- Supports TACACS & Radius AAA protocols
- Supports Port Mirroring/monitoring/sniffing
- Supports MIB counters (34 per port)
- Supports Loopback modes
- Supports Link diagnostic capabilities
- Supports Remote Monitoring/Switch Monitoring (RMON/SMON)
- Supports Trivial File Transfer & Secure File Transfer Protocols
- Supports Network Time Protocol (NTP)
- Supports HTTPS, SSH2, DCHP, LLDP, MQTT
- UL497B Compliant POE Surge Protection on-board